

EXPOLED

Display Spots

Your key
exhibition
partner

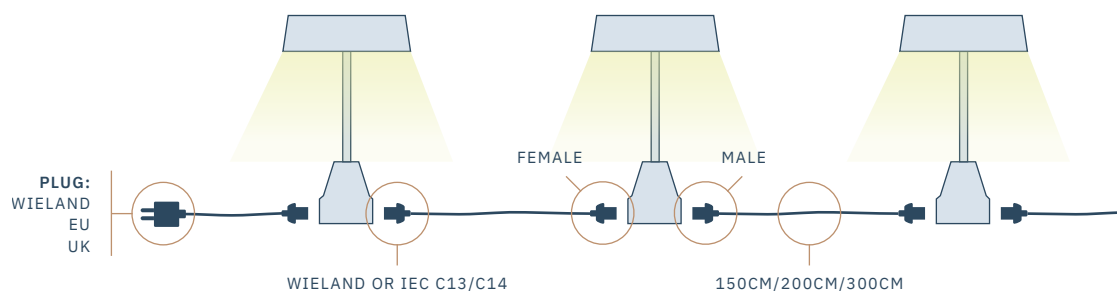


UP TO
70 WATT
—
8700
LUMENS

exposupply

Linkable

The base is made of aluminum, with a built-in adaptor. Available with Wieland connection or regular power cable IEC (C13-C14)



Robust
aluminum

Universal use

With the specially designed clips, the display spots can be mounted on various stand construction systems.



ALUVISION &
BEMATRIX



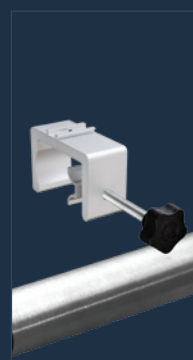
OCTANORM &
MODUL



PANEL



CUSTOM



TRUSS



TRUSS HOOK

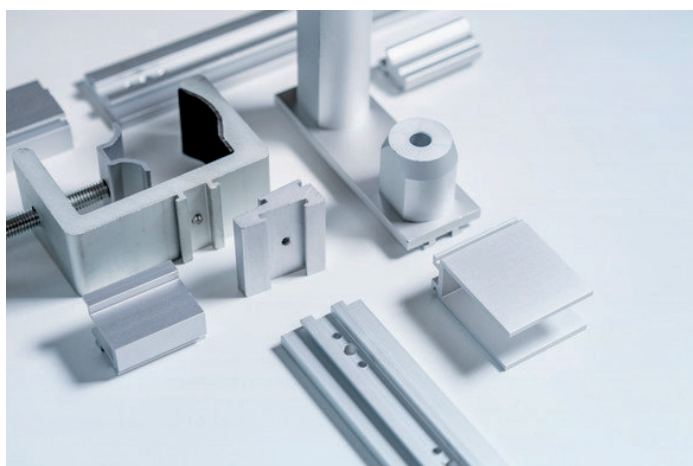
High light output

The most powerful LED display spots available for stand construction. The 70 Watt display spots provide light up to 8700 lumens.



Universally applicable

Use the same displayspot on every stand construction system. With a wide range of clips, the same spot can be used on a traditional wooden construction, an aluminum system such as Aluvision, beMatrix, Octanorm, Syma, Modul, etc. or on a truss.



Various colour temperatures

All display spots are available in the colour temperature that suits the stand you are building, ranging from 3000 Kelvin (warm white), 4000 Kelvin (neutral white) to 5700 Kelvin (cool white).



Wide range
of accessories

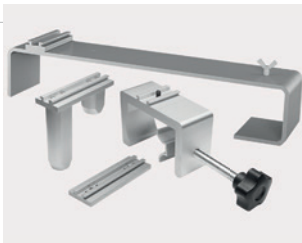


NOVI 70

Most powerful 70 Watt LED display spot available.
Due to the high light output and the integrated safety ring, it can be used at great heights. Also ideal for banner lighting.



- Robust aluminum
- Wieland or IEC C13-C14
- Safety ring
- Linkable
- Various colour temperatures



Flexible use

Due to the different mounting clips available, the same lamp can be used on various stand construction systems or on a truss.



Safety requirements

Integrated safety ring that has been specially developed for use in stand construction, to ensure optimum safety.



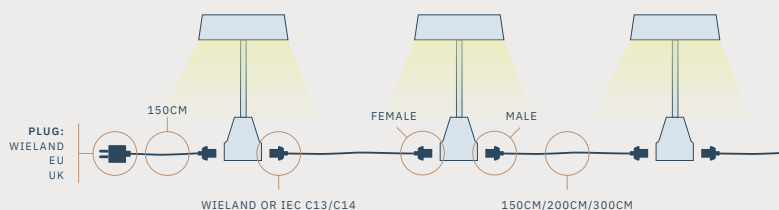
Transportbox

Specially developed a transport box for 5 lamps per box. This allows you to transport your spots safely and easily. There is also space for clips and cables. Including lid.



Linkable

For linking the display spots, connection cables are available in various lengths and plugs.



Specifications

Power	70 Watt	Input voltage (V)	AC 100-240V
Linkable	Single or Serial connection	Adapter	Built-in IEC C14-C13 or Wieland
Dimensions	760 x 264 x 57 mm	Material	Aluminum
Beam angle	90°	Luminous flux	Max 8700 lm
LED number	80	LED type	SMD
Energy label	A+	Weight	1500 g
Classification	CE, TÜV-GS	Lamp lifetime	30000 hrs

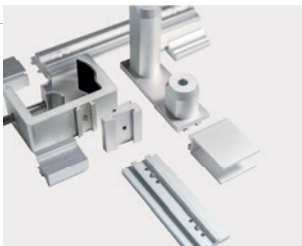


NOVI 50

The powerful 50 Watt LED display spot provides a light output of up to 5000 lumens and is suitable for installation at a height up to 5 meters.



- Robust aluminum
- Wieland or IEC C13-C14
- Linkable
- Various colour temperatures
- Wide range of clips



A clip for every system

Due to the different mounting clips available, the same lamp can be used on various stand construction systems or on a truss.



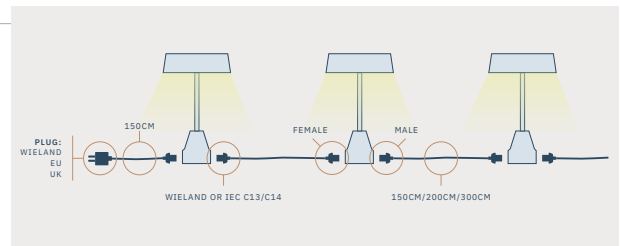
Linkable

For linking the display spots, connection cables are available in various lengths and plugs.



Transportbox

Specially developed transport box for 8 lamps per box. This allows you to transport your spots safely and easily. There is also space for clips and cables. Including lid.



Specifications

Power	50 Watt	Input voltage (V)	AC 100-240V
Linkable	Single or Serial connection	Adapter	Built-in IEC C14-C13 or Wieland
Dimensions	660 x 194 x 57 mm	Material	Aluminum
Beam angle	90°	Luminous flux	Max 5000 lm
LED number	50	LED type	SMD
Energy label	A+	Weight	1250 g
Classification	CE, TÜV-GS	Lamp lifetime	30000 hrs

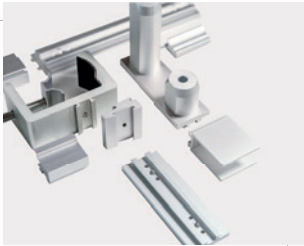


LUMI 30

Compact and sleek 30 Watt LED display spotlight with a light output of 3700 lumens. Widely applicable on all kinds of systems and various heights.



- Robust aluminum
- Wieland or IEC C13-C14
- Linkable
- Various colour temperatures
- Wide range of clips



A clip for every system

Due to the different mounting clips available, the same lamp can be used on various stand construction systems or on a truss.



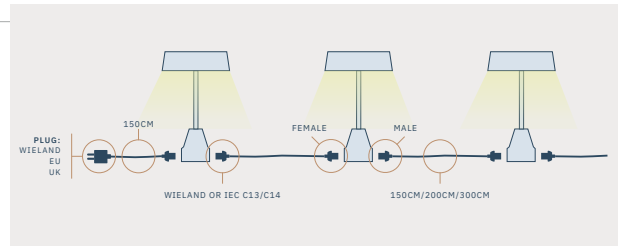
Linkable

For linking the display spots, connection cables are available in various lengths and plugs.



Transportbox

Specially developed transport box for 8 lamps per box. This allows you to transport your spots safely and easily. There is also space for clips and cables. Including lid.



Specifications

Power	30 Watt	Input voltage (V)	AC 100-240V
Linkable	Single or Serial connection	Adapter	Built-in IEC C14-C13 or Wieland
Dimensions	690 x 180 x 70 mm	Material	Aluminum
Beam angle	90°	Luminous flux	Max 3700 lm
LED number	36	LED type	SMD
Energy label	A+	Weight	1200/950 g
Classification	CE, TÜV-GS	Lamp lifetime	30000 hrs

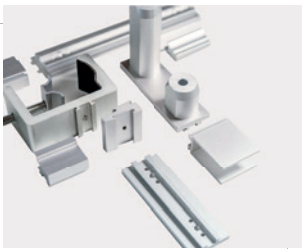


META 25

The slim and classic LED display spot provides a wide distribution of light with a light output of up to 2750 lumens. Suitable for mounting on standard stand heights.



- Aluminium robuste
- Wieland ou IEC C13-C14
- Linkable
- Various colour temperatures
- Wide range of clips



A clip for every system

Due to the different mounting clips available, the same lamp can be used on various stand construction systems or on a truss.



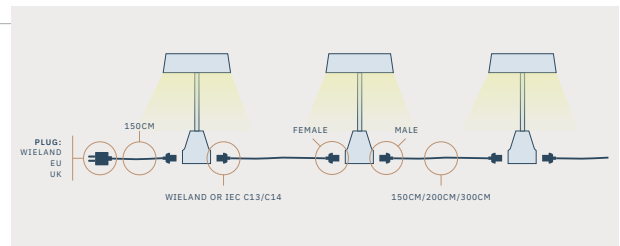
Linkable

For linking the display spots, connection cables are available in various lengths and plugs.



Transportbox

Specially developed transport box for 8 lamps per box. This allows you to transport your spots safely and easily. There is also space for clips and cables. Including lid.



Specifications

Power	25 Watt	Input voltage (V)	AC 100-240V
Linkable	Single or Serial connection	Adapter	Built-in IEC C14-C13 or Wieland
Dimensions	610 x 75 x 24 mm	Material	Aluminum
Beam angle	120°	Luminous flux	Max 2750 lm
LED number	50	LED type	SMD
Energy label	A+	Weight	1000 g
Classification	CE, TÜV-GS	Lamp lifetime	30000 hrs

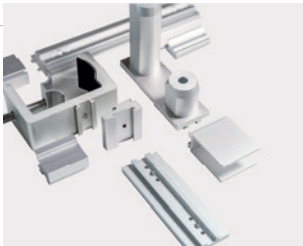


META 25 externe

The slim and classic LED spotlight gives nice light distribution thanks to its wide head. The external adapter provides the power for the display spot.



- Slim design
- Wide light beam
- Various colour temperatures
- Wide range of clips



A clip for every system

Due to the different mounting clips available, the same lamp can be used on various stand construction systems or on a truss.



Transportbox

Specially developed transport box for 8 lamps per box. This allows you to transport your spots safely and easily. There is also space for clips and cables. Including lid.

Specifications

Power	25 Watt	Input voltage (V)	AC 100-240V
Linkable	-	Adapter	External adapter DC 34V 0.6A
Dimensions	480 x 75 x 24 mm	Material	Aluminum
Beam angle	120°	Luminous flux	Max 2750 lm
LED number	50	LED type	SMD
Energy label	A+	Weight	1400 g
Classification	CE, TÜV-GS	Lamp lifetime	30000 hrs



CYRA 20

Sleek, modern and stylish LED display spot.
Ideally suited for a trade fair wall of 2.5 metres
high or on a pop-up wall. Can easily be linked
with connection cables.



- Modern design
- Linkable (IEC C7 - C8)
- Clips included for both modular system and pop-up wall
- Various colour temperatures



Flexible use

Clips included for pop-up wall or standard exhibition stand



Linkable

Simply link the spotlights together by using the integrated IEC C7-C8 connector and available connection cables.



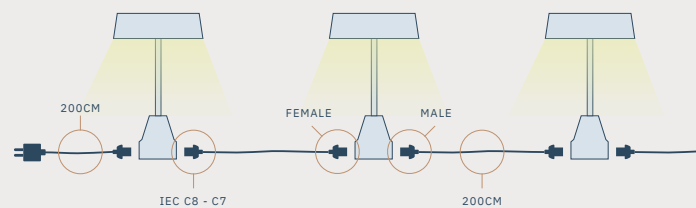
Transportbox

Specially developed transport box for 6 spots per box. This allows you to transport your spots safely and easily. There is also space for clips and cables. Including lid.



Bag for 2

Handy bag for 2 CYRA spots, where cables and clips can be inserted. Ideal accessory for any pop-up wall.



Specifications

Power	20 Watt	Input voltage (V)	AC 100-240V
Dimensions	510 x 153 x 45 mm	Adapter	Built-in IEC C14-C13
Beam angle	120°	Material	Aluminum
LED number	24	Luminous flux	Max 8700 lm
Energy label	A+	LED type	SMD
Lamp lifetime	30000 hrs	Weight	1500 g
Classification	CE, TÜV-GS		

exposupply

Company	Exposupply B.V.	Phone	+31 (0)85 273 64 21
Address	Eckertstraat 16	Email	info@exposupply.com
City	8263 CB Kampen	Country	The Netherlands